

**RESIDENTIAL IMPROVEMENT GUIDELINES
AMENDMENT**

AMENDMENT NO. 13

The "Residential Improvement Guidelines," Section II, 2.32 Garage Doors, is amended as follows:

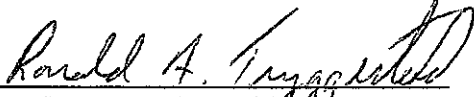
2.32 Garage Doors. Board approval required when changing design and color. Doors shall be painted solid white or the base color of house. Double doors must be four panels high and eight panels across all equal in size. Single doors must be four panels high and four panels across all equal in size. Windows in garage doors must be approved and meet the following standards:

- a. Windows must be clear glass, in the shape of squares or rectangles only, positioned in the upper row, and include all eight panels on a double door and all four panels on a single door.
- b. Each window panel must have a grill with a single cross positioned in the center of the window and all four glass panes must be equal in size. The grill and trim around each window shall be the same color as the garage door.


Garage Door Hardware: Must be approved and be complementary to the property.

Garage Doors shall be kept closed when not in use.

Adopted by the Board on May 18, 2009.



Ron Tryggestad, President




Gery Palmer, Vice President



Jeff Hansen, Secretary



Denise McClard, Treasurer

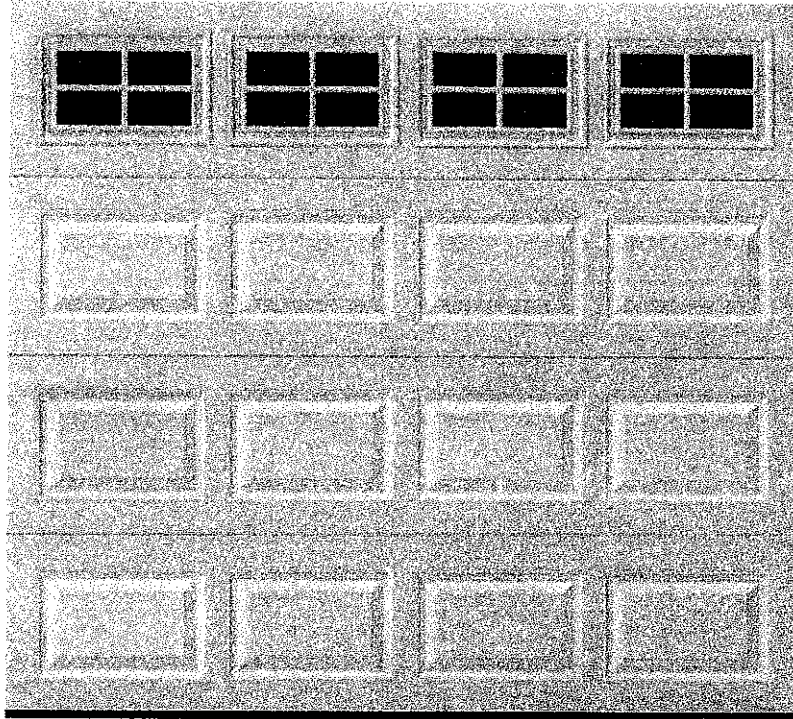


Jim Crowley, Member At-large

STYLE GUIDE



SP20 - STOCKTON DECORATRIM

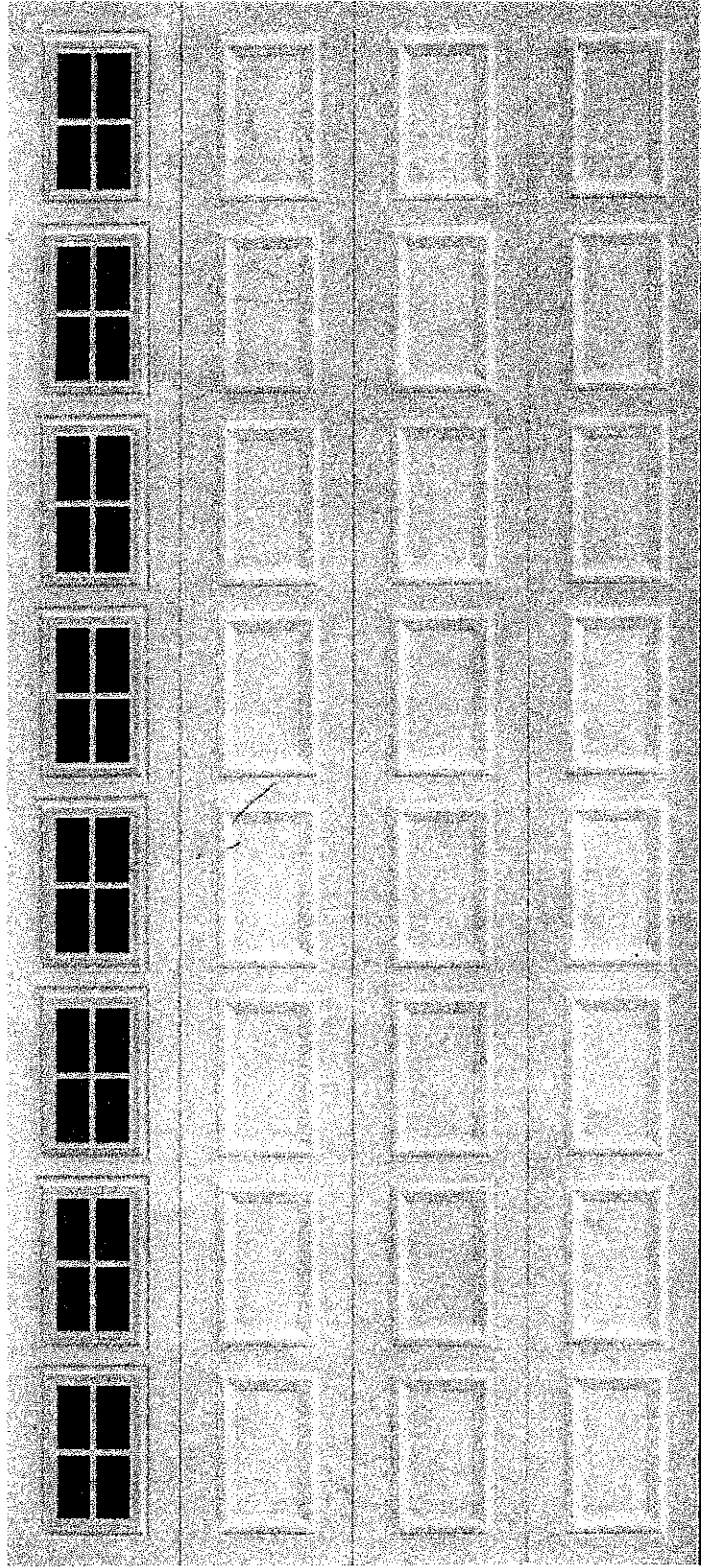


-- [email this page](#) -- -- [print](#) -- -- [close](#) --



STYLE GUIDE

SP20 - STOCKTON DECRATRIM



email this page -- -- print -- -- close --

7